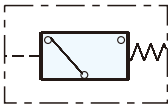


Features



Features

- 1. Easy operation and safe.
- 2. Compact size for simple installation.
- 3. Stable Pressure setting.

How to order

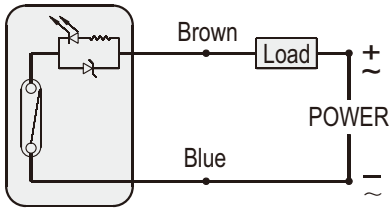
MAL - 07	N	L
Pressure Switch	Thread	Pressure setting
	Blank : G	Blank : OFF
	N : NPT	L : ON
	R : Rc	



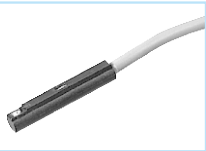
Specifications

Model	MAL-07
Port size	1/8"
Fluid	Compressed air
Body material	Aluminum
Proof pressure	10Bar(10.2 kgf/cm ²)
Maximum pressure operating	7Bar(7.14 kgf/cm ²)
Pressure setting range	1~7Bar(1.02~7.14 kgf/cm ²)(OFF)
Hysteresis pressure	0.75Bar
Repeatability (switch output)	±0.15Bar
Ambient temperature	-5℃ ~ 60℃
Net Weight	127g

Circuit diagram



Sensor	AL-07R
Voltage range	5~120VDC/AC
Max. current	100mA
Max. Contact rating	10W(VA)



Pressure setting notice

- 1. OFF: When pressure drop to the setting value, the LED indicator is off.
- 2. ON: When pressure rise to the setting value, the LED indicator is on.

Memo...

Dimensions

