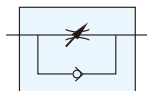


Symbol



Features

1. The valve provides best way to control piston speed of cylinder.
2. Non-return mechanism which allows full flow in one direction.

How to order

S	—	06	N
Speed control valve		Port size	Thread
		06: 3/4"	Blank: G
		08: 1"	N : NPT
			R : Rc

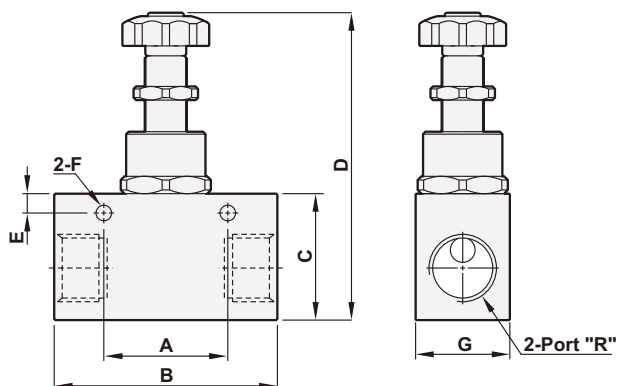


Specifications

Model	S-06	S-08
Port size	3/4"	1"
Body material	Aluminum alloy	
Fluid	Compressed air	
Sectional area	43mm ²	
Operating pressure range	0 ~ 9.9 kgf/cm ²	
Proof pressure	10 kgf/cm ²	
Ambient temperature	-10℃ ~ 80℃	

Dimensions

S-06, 08



Model	S-06	S-08
R	3/4"	1"
A	50.0	50.0
B	90.0	90.0
C	51.0	51.0
D	124.0	124.0
E	7.8	7.8
F	φ 6.3	φ 6.3
G	38.0	38.0