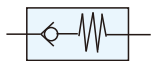


Symbol



Features

1. Check ball mechanism allows fluid flowing in one direction only.



How to order

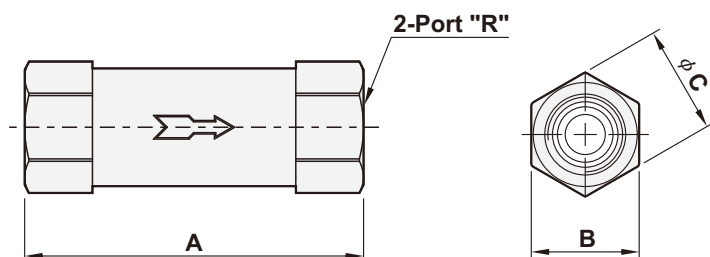
C	—	01	N
Check valve		Port size	Thread
		01 : 1/8"	Blank : G
		02 : 1/4"	N : NPT
		03 : 3/8"	
		04 : 1/2"	

Specifications

Model	C-01	C-02	C-03	C-04
Port size	1/8"	1/4"	3/8"	1/2"
Body material	Aluminum alloy			
Fluid	Compressed air			
Sectional area	10mm ²	23mm ²	38mm ²	56mm ²
Operating pressure range	0.3 ~ 8.0 kgf/cm ²			
Proof pressure	8 kgf/cm ²			
Ambient temperature	-10℃ ~ 80℃			
Net weight	17g	27g	46g	82g

Dimensions

C-01~04



Model	C-01	C-02	C-03	C-04
R	1/8"	1/4"	3/8"	1/2"
A	47.0	50.0	65.0	65.0
B	14.0	17.0	22.0	27.0
φ C	15.5	18.5	24.5	29.5