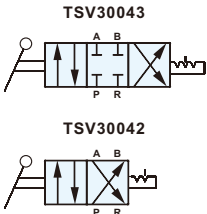


### Symbol



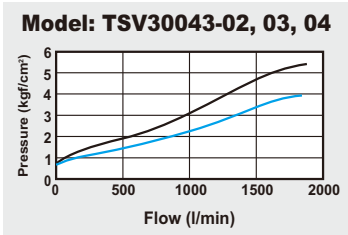
### Features

1. Simply operating.
2. Large flow rate.
3. High safety.
4. Light weight.
5. 4 kinds of installation.
6. Twist lock is optional for safety operation.

### How to order

TSV30043 – 02	N	B
TSV30043: 4/3 Way	Port size	Thread
TSV30042: 4/2 Way	Blank: G	Blank: Standard
	02 : 1/4"	N : NPT
	03 : 3/8"	R : Rc
	04 : 1/2"	C : With twist lock
		P : With panel mounting

### Flow chart

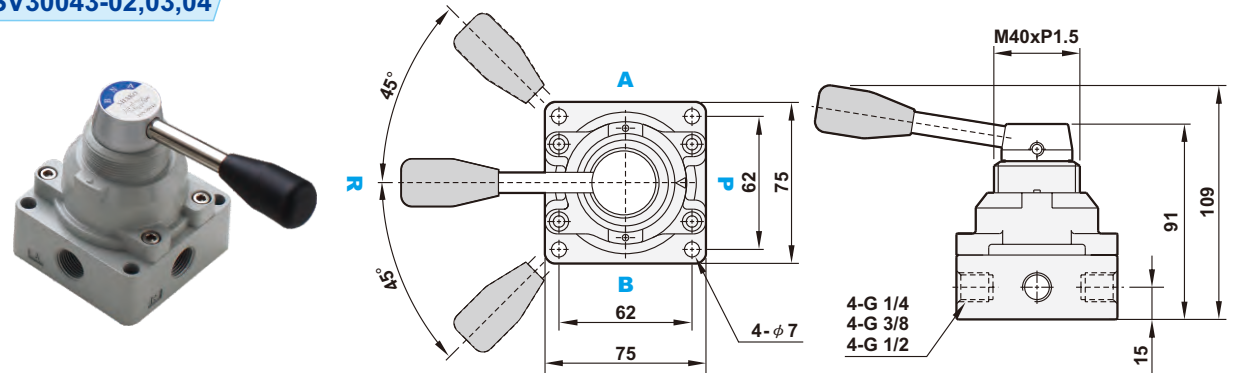


### Specifications

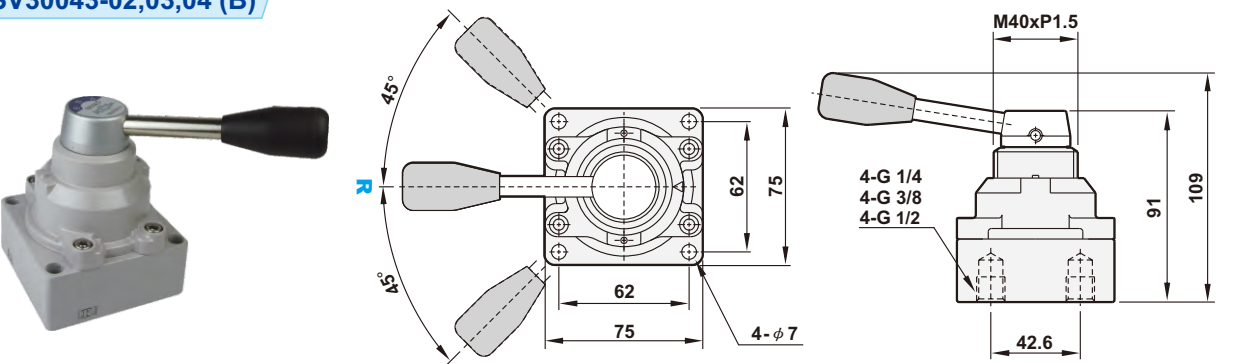
Model	TSV30043(2)-02	TSV30043(2)-03	TSV30043(2)-04
Port size	1/4"	3/8"	1/2"
Body material	Aluminum alloy		
Panel dimension	M40 x P1.5 (For panel mounting only)		
Fluid	Compressed air		
Sectional area	18mm <sup>2</sup>		
Operating pressure range	0 ~ 9 kgf/cm <sup>2</sup>		
Proof pressure	10kgf/cm <sup>2</sup>		
Ambient temperature	-10℃ ~ 60℃		
Net weight	600g	580g	560g

### Dimensions

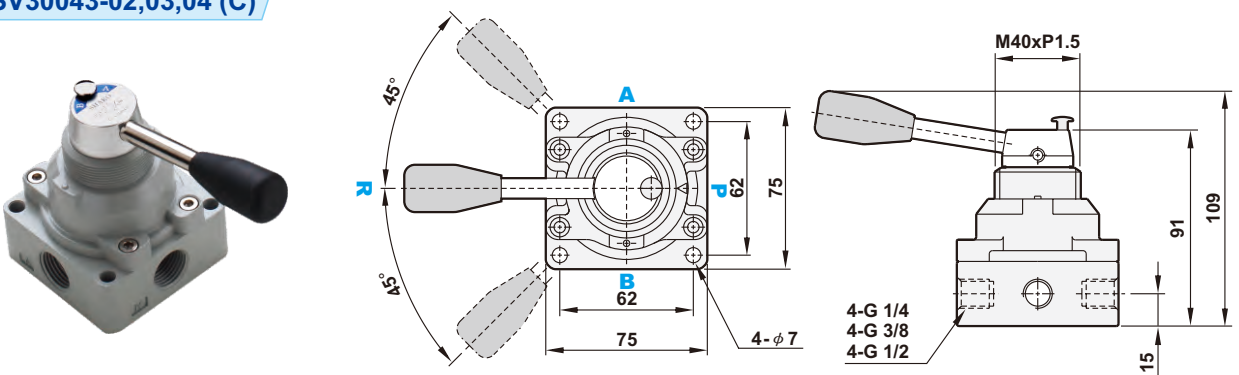
#### TSV30043-02,03,04



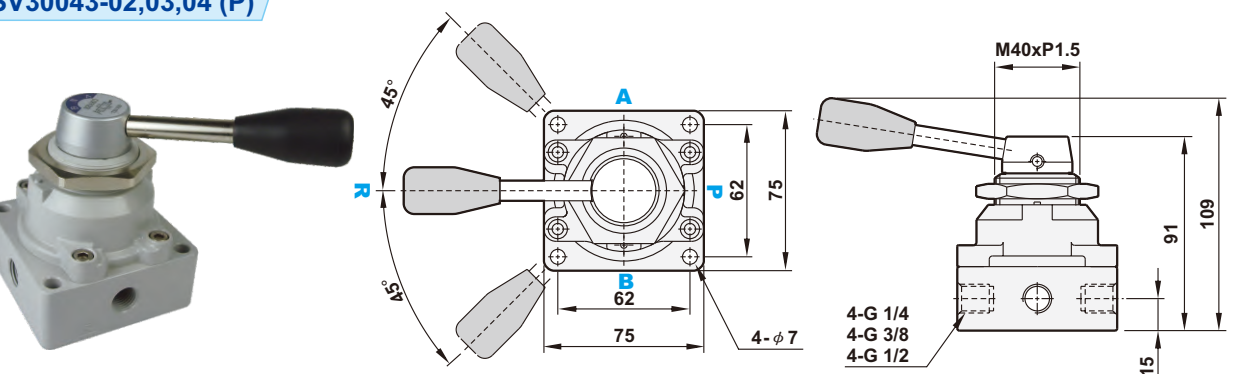
#### TSV30043-02,03,04 (B)



#### TSV30043-02,03,04 (C)



#### TSV30043-02,03,04 (P)

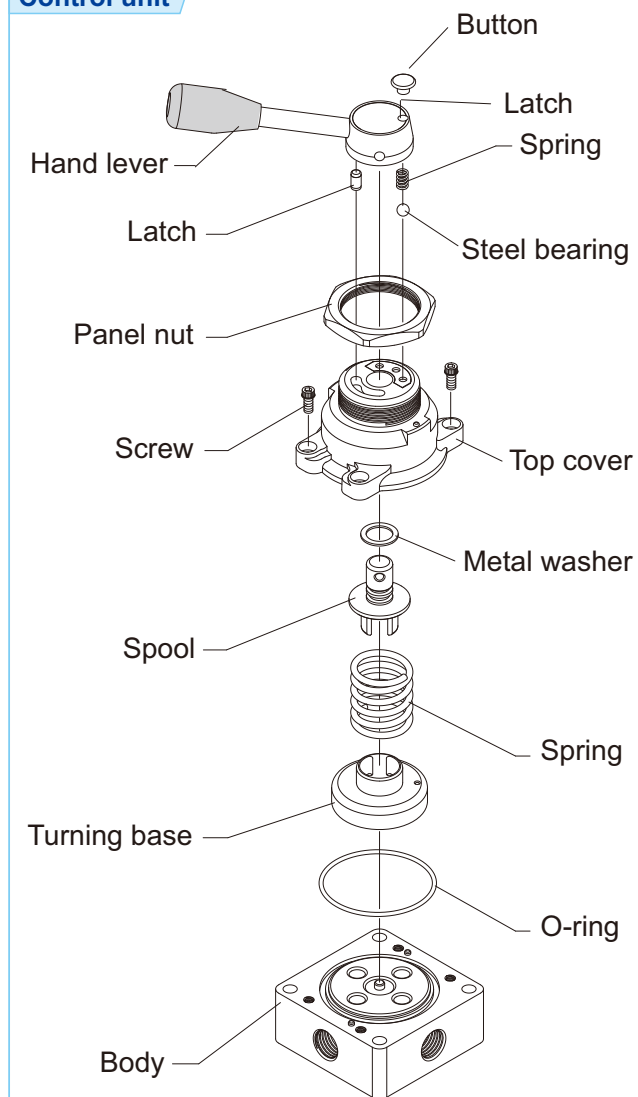
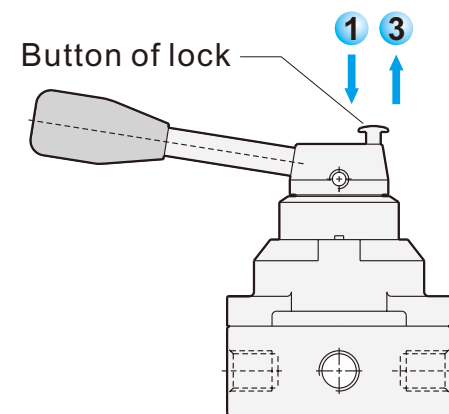
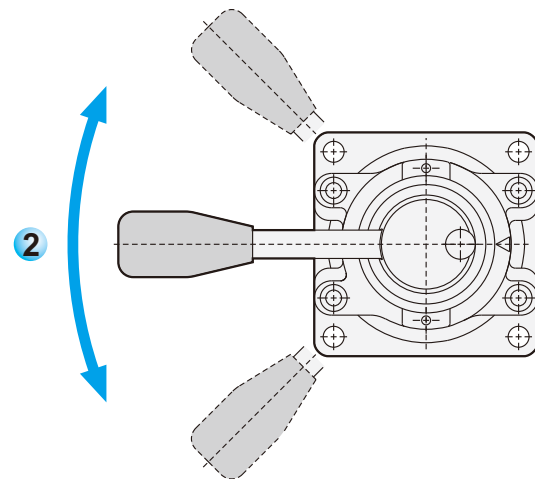


## ■ Operating steps for twist lock

## ■ Explosion

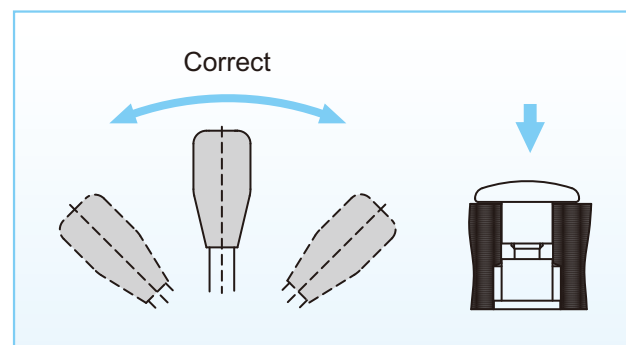
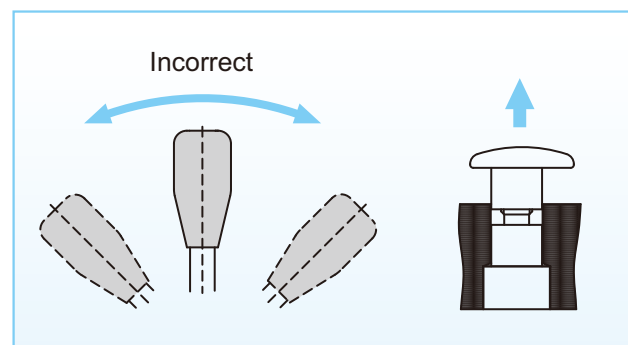
## Operating steps TSV30043C

## Control unit



1. Push the button of lock down.  
2. Turn lever to the left or right.

3. Release your hand to let the button of lock bound back.  
4. Please do not turn lever when the button of lock bound back.



Memo...

