

■ Features

1. Medium and compact size, 18mm width solenoid valve.
2. Manual override design for easy test and operation.
3. Anodized aluminum body and strict quality control provide a long durability.
4. Coil nut is available, please refer to page 5-2.



■ How to order

AM520 B	X	—	01	N	—	S	2	D	L
520: 5/2 Way	Valve type	Acting style	Port size	Thread	Solenoid	Voltage	Coil type	Led	
530: 5/3 Way	A: Body ported B: Base mounted	Blank: Standard 5/3 Way Blank: Closed center X: Exhaust center Y: Pressurized center	01: 1/8"	Blank: G N: NPT R: Rc	S: Single solenoid D: Double solenoid	1: 110VAC 2: 220VAC 6: 24VAC 7: 12VDC 9: 24VDC	Blank: Lead wire D: DIN	Blank: W/O LED L: W/I LED	

■ How to order manifold

MF520 — 01	N	02
For body ported valve	Thread	Stations
	Blank: G N: NPT R: Rc	02: 2 Stations 03: 3 Stations XX: XX Stations

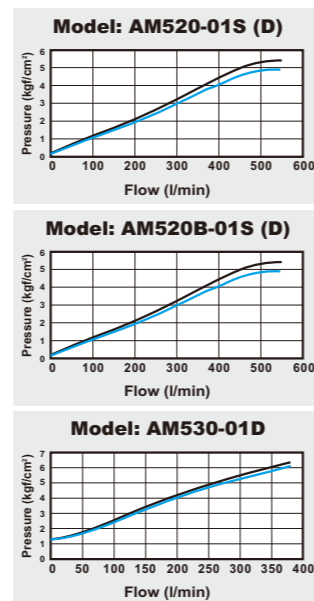
■ How to order manifold (B type)

SF520 — 01	N	02
For base mounted valve	Thread	Stations
	Blank: G N: NPT	02: 2 Stations 03: 3 Stations XX: XX Stations

■ Specifications

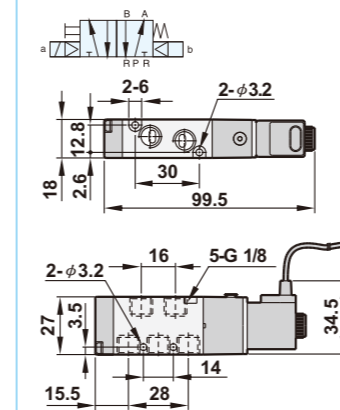
Model	AM520-01-S(D)	AM520B-01-S(D)	AM530-01-D
Port size	1/8"		
Body material	Aluminum alloy		
Fluid	Compressed air		
Acting	Internal pilot		
Effective area	11mm ²		9mm ²
Operating pressure range	1.5~8 kgf/cm ²		2~7 kgf/cm ²
Proof pressure	9.9 kgf/cm ²		
Ambient temperature	-10℃ ~ 50℃		
Duty cycle	100% ED		
Coil type	Lead wire (Standard), DIN (Option)		
Protection class	IP65 (DIN 40 050)		
Insulation class	F		
Voltage tolerance	±10%		
Standard voltage	220VAC, 110VAC, 24VDC (The other voltage is optional)		
Net weight	125g (175g)	580g (660g)	215g

■ Flow chart

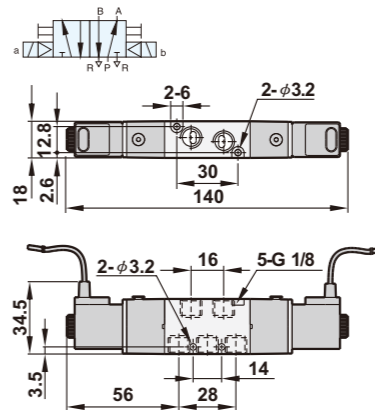


■ Dimensions

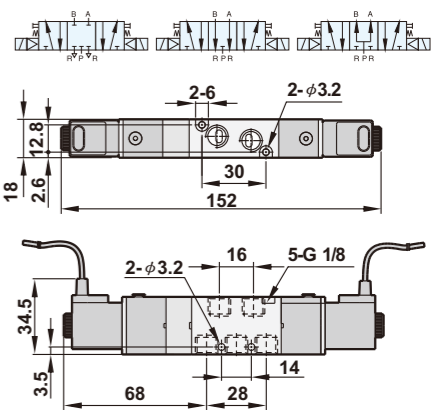
AM520-01-S



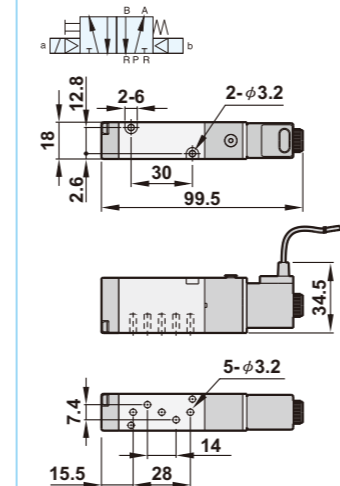
AM520-01-D



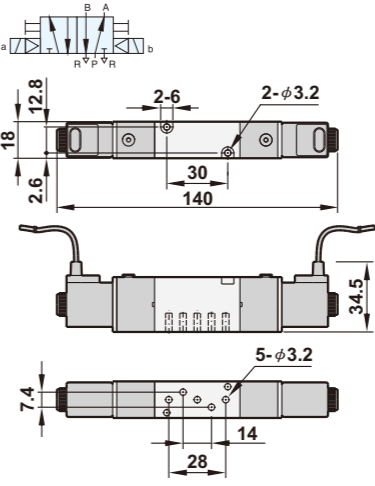
AM530(X)(Y)-01-D



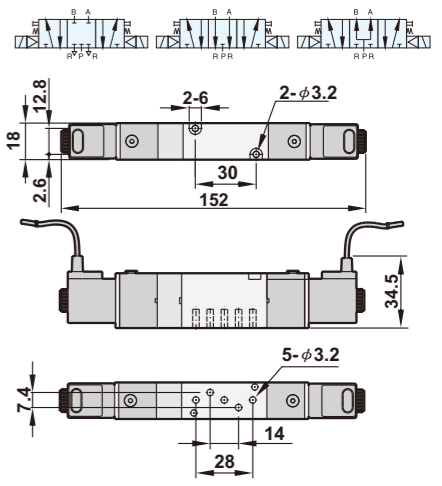
AM520B-01-S



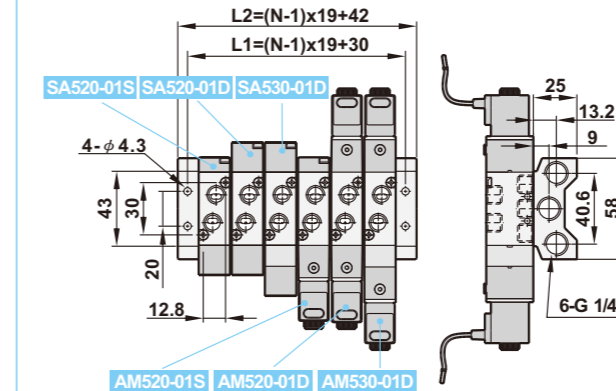
AM520B-01-D



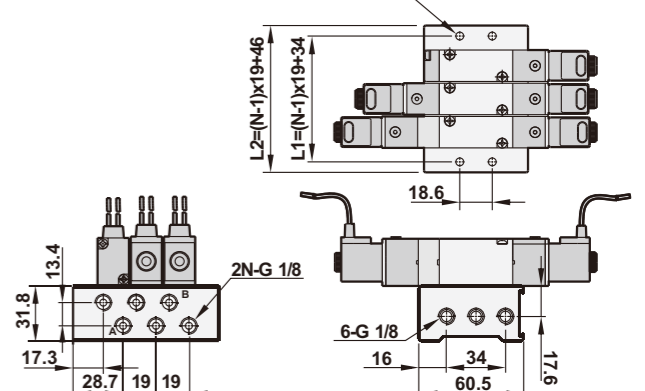
AM530(X)(Y)B-01-D



MF520-0106



SF520-0103



Number of station (N)	2	3	4	5	6	7	8	9	10	Number of station (N)	2	3	4	5	6	7	8	9	10
L1	49	68	87	106	125	144	163	181	201	L1	53	72	91	110	129	148	167	186	205
L2	61	80	99	118	137	156	175	194	213	L2	65	84	103	122	141	160	179	198	217